



Devon & Cornwall Police
Building safer communities together

Chief Constables Performance Report

January 2015

**To provide a high quality
public service focussed
on reducing harm to the
most vulnerable**



Victim Based Crime

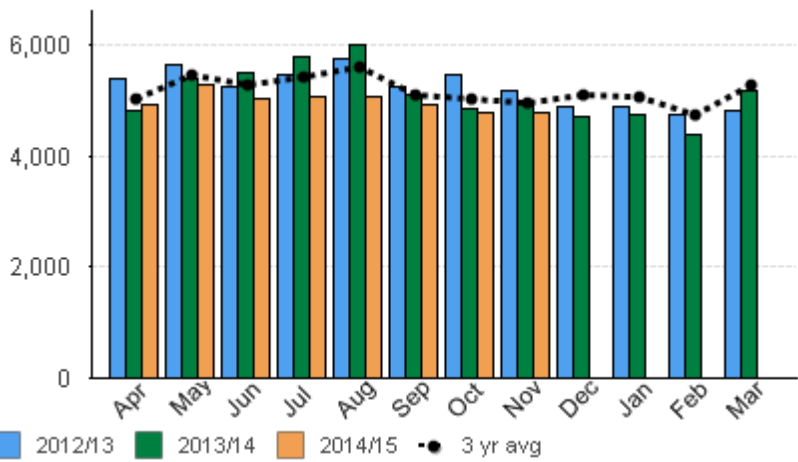


- Homicide
- Violence with/without injury
- Robbery
- Burglary dwelling/non-dwelling
- Vehicle offences
- Shoplifting
- Other theft
- Criminal damage
- (All excluding domestic abuse or hate crime)

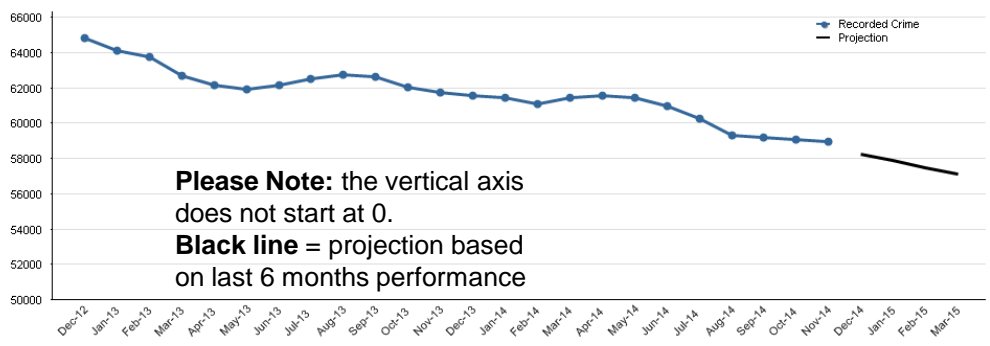
Attainment: Improvement in performance expected

- Long term reductions in acquisitive crime (burglary, robbery and vehicle crime)
- Reductions in criminal damage and other theft over time.
- Recent reduction in Shoplifting following rise in levels last year
- Performance challenges: violence without injury

Monthly Comparisons



12 Month Rolling Trend Over Time



Please Note: the vertical axis does not start at 0.
Black line = projection based on last 6 months performance

Domestic Abuse Non-Crime Incidents and Crimes

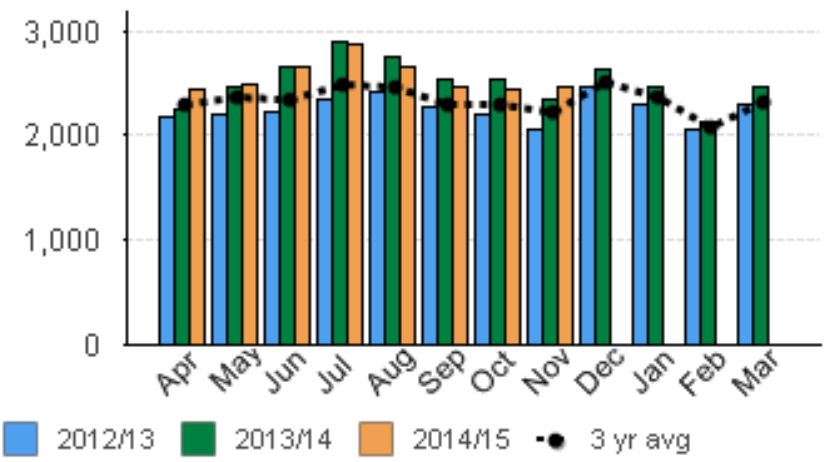


Domestic abuse recorded crime (all crime types) and non-crime incidents. Individual domestic abuse crimes and incidents are flagged at source

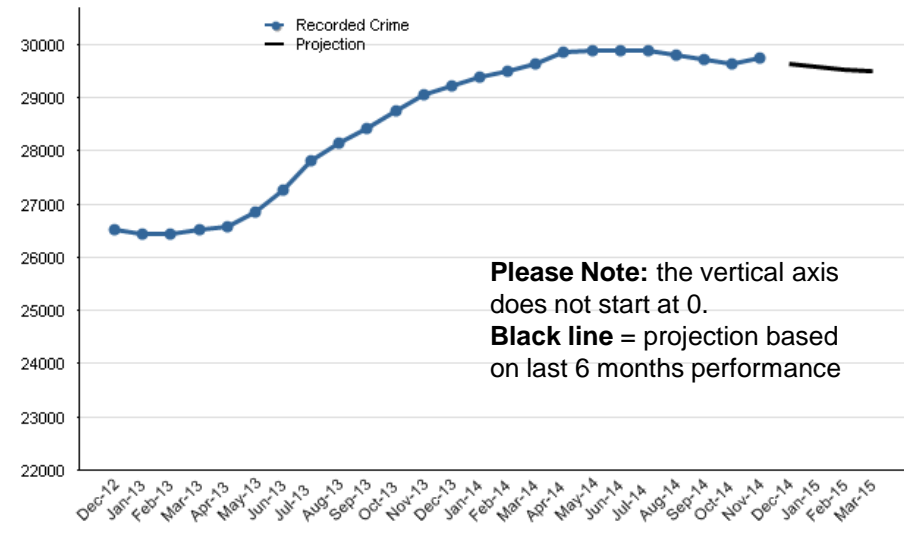
Attainment: Increased public confidence to report

- Increased reporting of Domestic Abuse over time, with supporting outcomes measures for crimes (30% offender outcomes, 14% ongoing investigation, 50% evidential difficulties (but suspect identified)).
- Repeat victimisation and victim satisfaction measures are in development
- HMIC Inspection published and being acted upon
- Action plan being monitored via Strategic Board
- Specific Sexual Offence and Domestic Abuse Investigation Teams operational
- Safeguarding pilot commenced – interim evaluation completed

Monthly Comparisons



12 Month Rolling Trend Over Time



Please Note: the vertical axis does not start at 0.
Black line = projection based on last 6 months performance

Rape and Other Sexual Offences

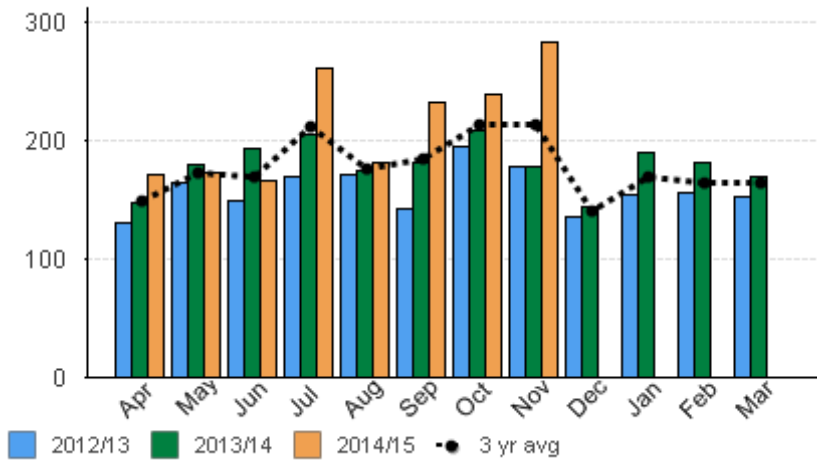


Rape and other sexual offences (including domestic abuse)

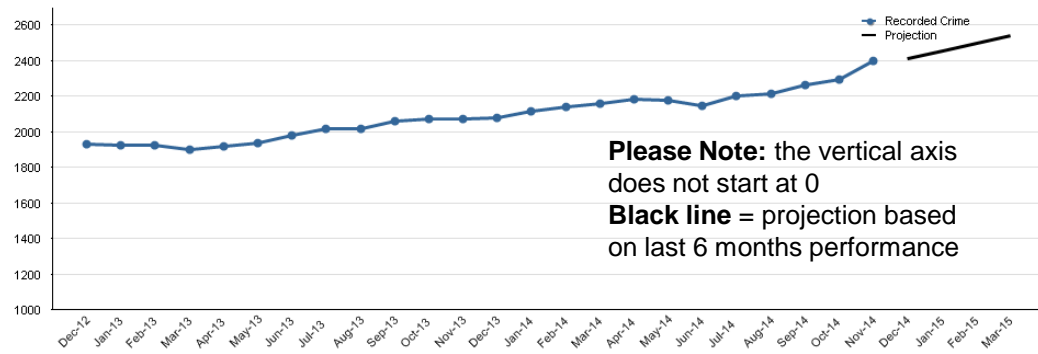
Attainment: Increased public confidence to report

- Increased reporting of sexual offences over time, with supporting outcomes measures for crimes available (47% ongoing investigation, 11% offender outcomes, 28% evidential difficulties (suspect identified)).
- Victim satisfaction measures are in development
- Impact of Historic and Current Reporting reviewed previously
- Action plan being monitored via Strategic Board
- Specific Sexual Offence and Domestic Abuse Investigation Teams operational
- Safeguarding pilot commenced – interim evaluation completed

Monthly Comparisons



12 Month Rolling Trend Over Time

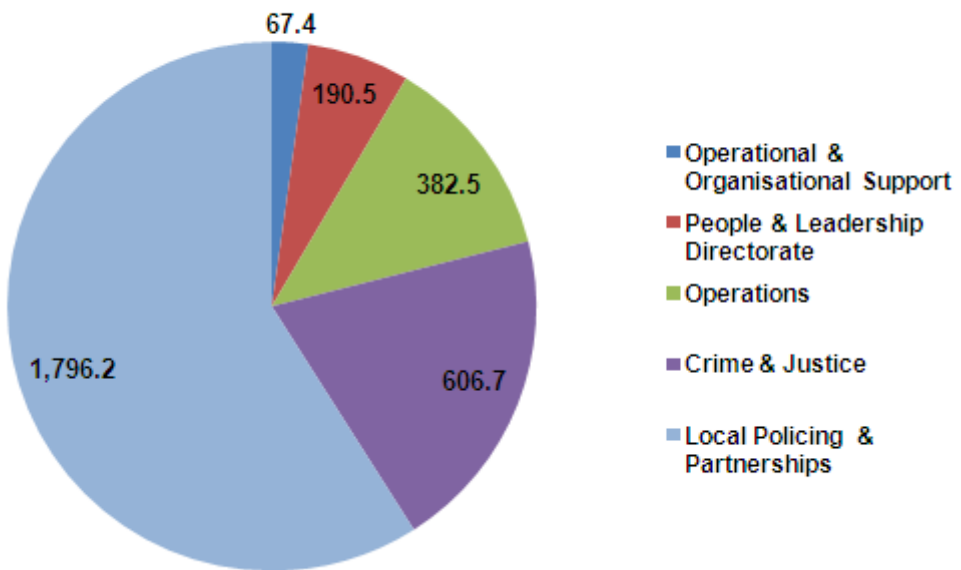


Please Note: the vertical axis does not start at 0
Black line = projection based on last 6 months performance

Police Officer Establishment (over 3000)

Attainment: Current good performance should be maintained

Strength FTE



On 14 December 2014 there were 3048.3 FTE officers

Note: Does not include Career Breaks or Secondments

- 37 (headcount) officers on maternity leave (1.2% of officers)
- 178 (headcount) officers on Recuperative & Restricted Duties (5.8% of officers)

Additional to the 3,048.3 total above we have 10.0 FTE officers on secondment (including for example Operation Zephyr and HMIC) and 18.3 FTE on career breaks

Violence Against the Person Offences

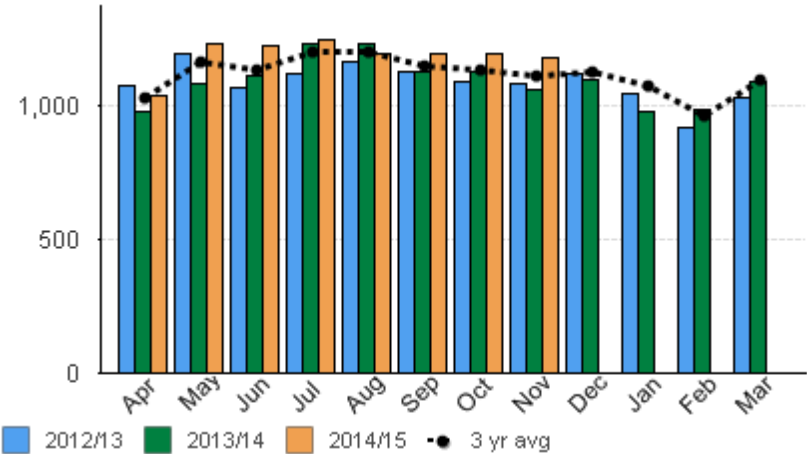


Homicide
 Violence with injury
 Violence without injury
 (All excluding domestic abuse offences and hate crime)

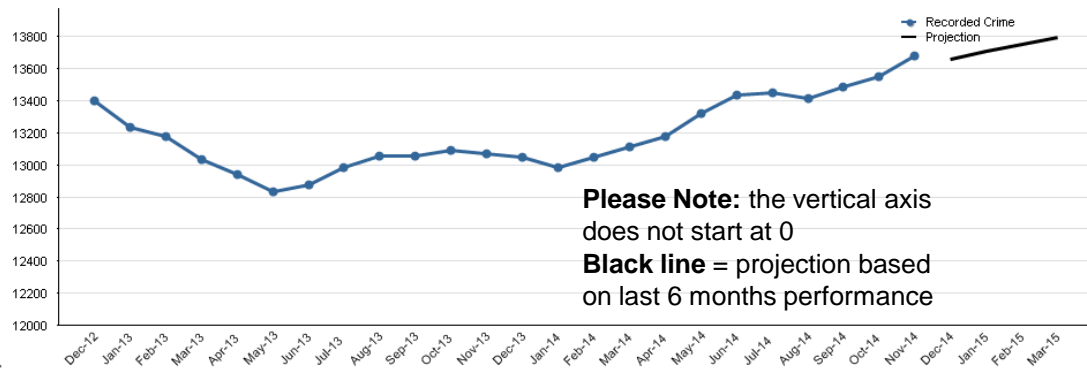
Attainment: Transformation of performance is required

| Geography | Recorded Crimes 12 Months to 30/11/14 | Per 1000 Population | Recorded Crimes 12 Months to 30/11/13 | Per 1000 Population |
|---------------------------------------|---------------------------------------|---------------------|---------------------------------------|---------------------|
| West Cornwall LPA | 1,833 | 6.9 | 1,896 | 7.2 |
| East Cornwall LPA | 1,912 | 6.9 | 1,909 | 6.9 |
| Cornwall & Isles of Scilly | 3,745 | 6.9 | 3,805 | 7.0 |
| Plymouth LPA | 3,403 | 13.2 | 3,096 | 12.0 |
| South Devon LPA | 2,750 | 8.1 | 2,631 | 7.7 |
| Exeter, East & Mid Devon LPA | 2,331 | 7.0 | 2,170 | 6.5 |
| North & West Devon LPA | 1,446 | 6.8 | 1,367 | 6.4 |
| Devon | 6,527 | 7.4 | 6,168 | 7.0 |
| Force | 13,676 | 8.1 | 13,070 | 7.8 |

Monthly Comparisons



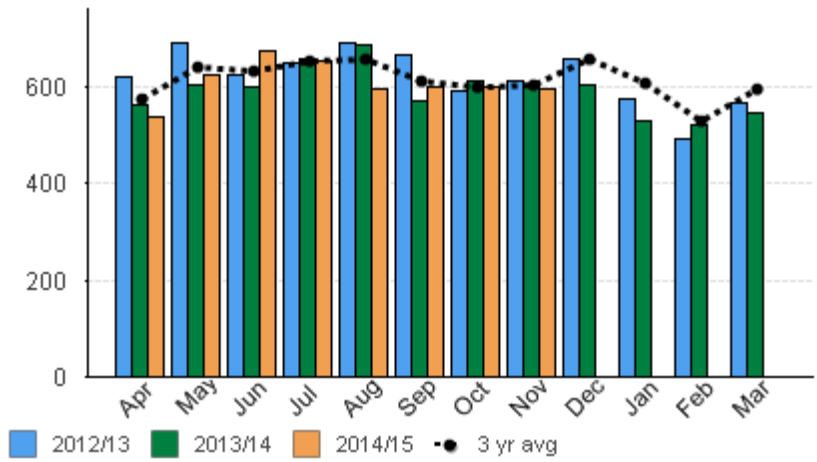
12 Month Rolling Trend Over Time



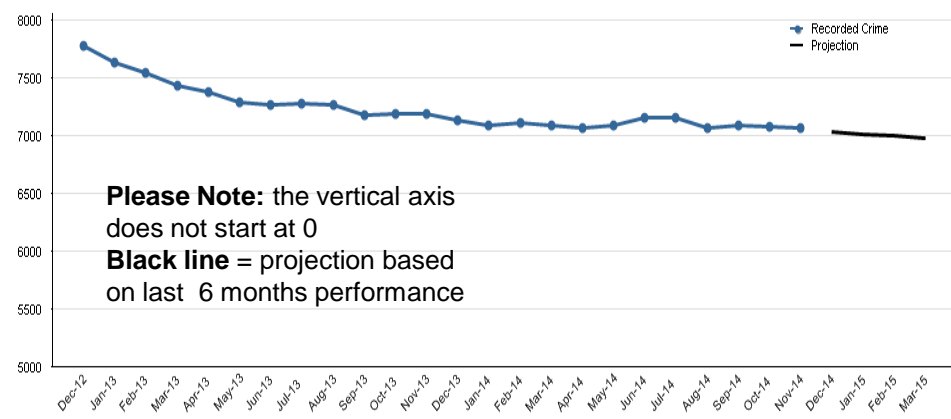
Violence Types

Violence With Injury (Not DA): e.g. GBH, ABH: Injury sustained or Intent to cause injury

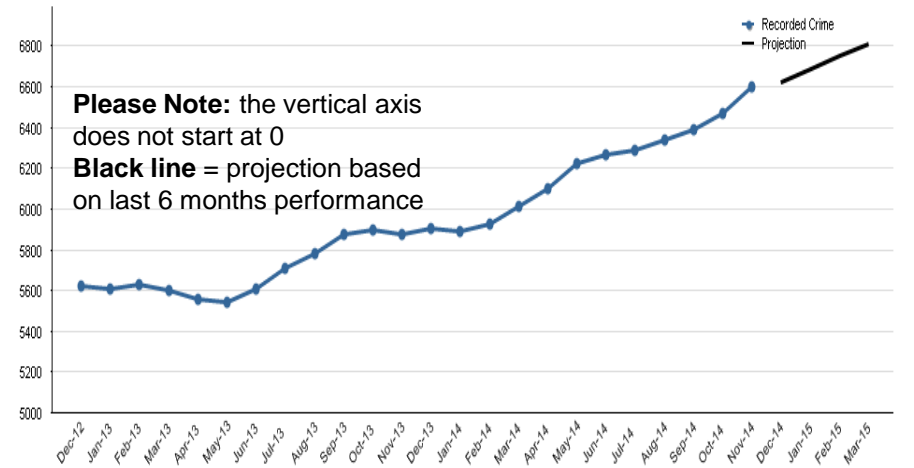
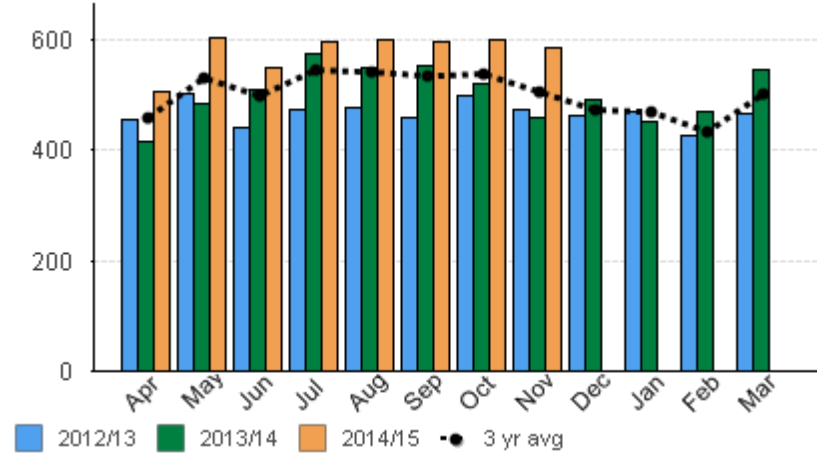
Monthly Comparisons



12 Month Rolling Trend Over Time



Violence Without Injury (Not DA): e.g. Common Assault: No visible mark or injury sustained



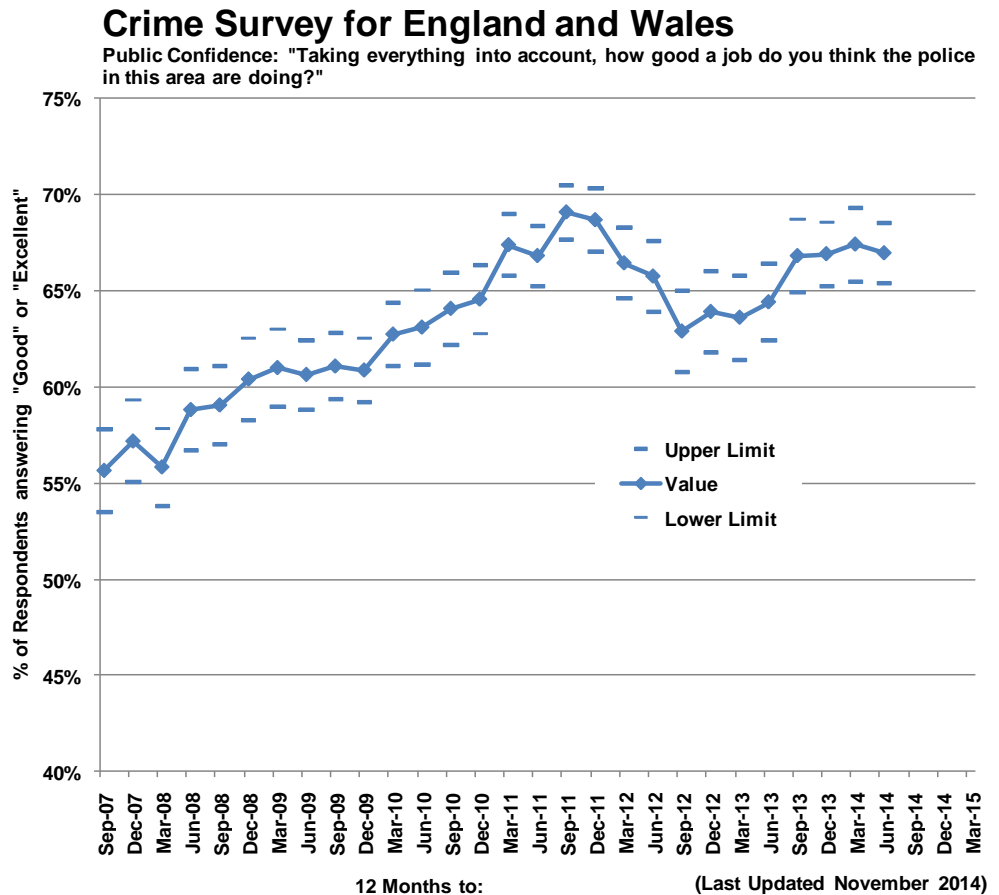
Public Confidence



Taken from the Crime Survey for England and Wales question: "Taking everything into account, how good a job do you think the police in this area are doing?"

Attainment: Current good performance should be maintained

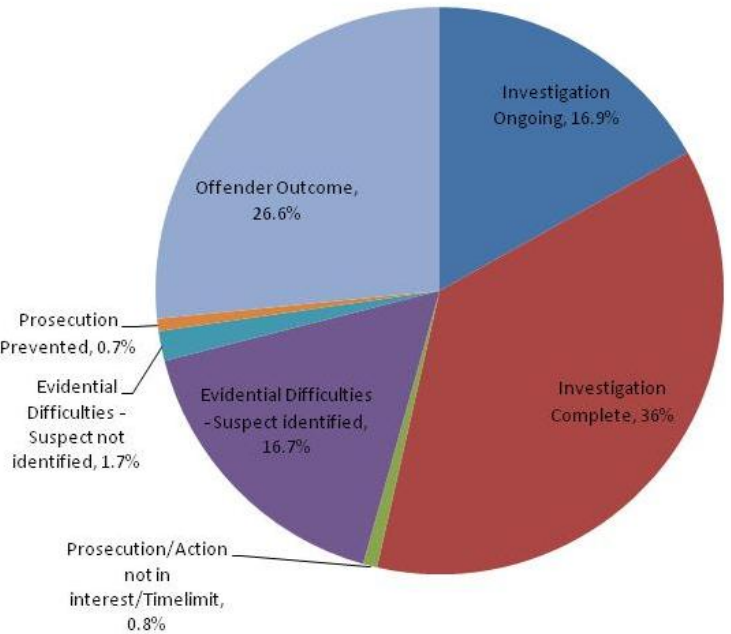
- The Force is ranked 7th highest nationally for this measure.
- Performance has Stabilised in the last four quarters



Please Note: the vertical axis does not start at 0

Secondary Measure: Outcomes

Percentage Outcomes by Outcome Group



Percentage Outcomes by Outcome Group for Total Crime recorded between 01/04/2014 and 09/12/2014

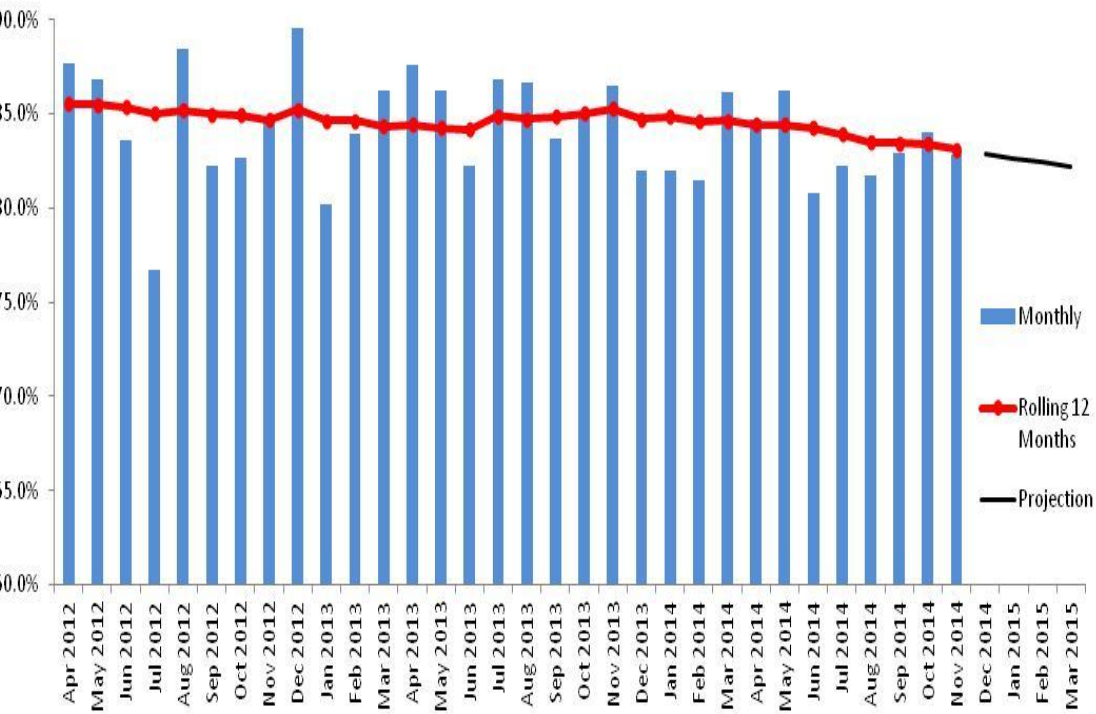
| Outcome Group | Outcome | Number of crimes with outcome | % of crimes with outcome |
|---|--|-------------------------------|--------------------------|
| Investigation Ongoing | Investigation Ongoing | 9728 | 15.4% |
| Investigation Ongoing | Total | 9728 | 15.4% |
| Investigation Complete | Investigation Complete: No Suspect - Cas | 21041 | 33.3% |
| Investigation Complete | Total | 21041 | 33.3% |
| Prosecution/Action not in interest/Timelimit | Not in the Public Interest-CPS | 73 | 0.1% |
| Prosecution/Action not in interest/Timelimit | Not in the Public Interest - Police | 313 | 0.5% |
| Prosecution/Action not in interest/Timelimit | Prosecution Time Limit Expired | 57 | 0.1% |
| Prosecution/Action not in interest/Timelimit | Total | 443 | 0.7% |
| Evidential Difficulties - Suspect identified | Suspect Identified - Evidential Difficulties | 5371 | 8.5% |
| Evidential Difficulties - Suspect identified | Victim no Support | 4195 | 6.6% |
| Evidential Difficulties - Suspect identified | Total | 9566 | 15.1% |
| Evidential Difficulties - Suspect not identified | Evidential Difficulties - Victim Declines | 974 | 1.5% |
| Evidential Difficulties - Suspect not identified | Total | 974 | 1.5% |
| Prosecution Prevented | Below Age of Criminal Responsibility | 110 | 0.2% |
| Prosecution Prevented | Suspect too Ill | 264 | 0.4% |
| Prosecution Prevented | Victim too Ill or Dead | 9 | 0.0% |
| Prosecution Prevented | Total | 383 | 0.6% |
| Offender Outcome | Charged/Summonsed | 7125 | 11.3% |
| Offender Outcome | Youth Caution | 444 | 0.7% |
| Offender Outcome | Adult Caution | 2129 | 3.4% |
| Offender Outcome | Taken into Consideration | 501 | 0.8% |
| Offender Outcome | Offender Died | 22 | 0.0% |
| Offender Outcome | Penalty Notice for Disorder | 324 | 0.5% |
| Offender Outcome | Cannabis Warning | 921 | 1.5% |
| Offender Outcome | Community Resolution | 3793 | 6.0% |
| Offender Outcome | Total | 15259 | 24.2% |
| Total | Total | 63163 | 100.0% |

Victim satisfaction



Force survey of victims of burglary dwelling, vehicle and violent offences. Sample size set by Home Office.

Attainment: Improvement in performance expected



- 12 months to November 2014:
- Overall Satisfaction: 83.1%
 - Burglary Dwelling Satisfaction: 86.2%
 - Vehicle Crime Satisfaction: 82.6%
 - Violent Crime Satisfaction: 80.4%

• Satisfaction levels are showing a small gradual decline over time.

• For the 12 months to June 2014 the National Results vary from 90% to 78%

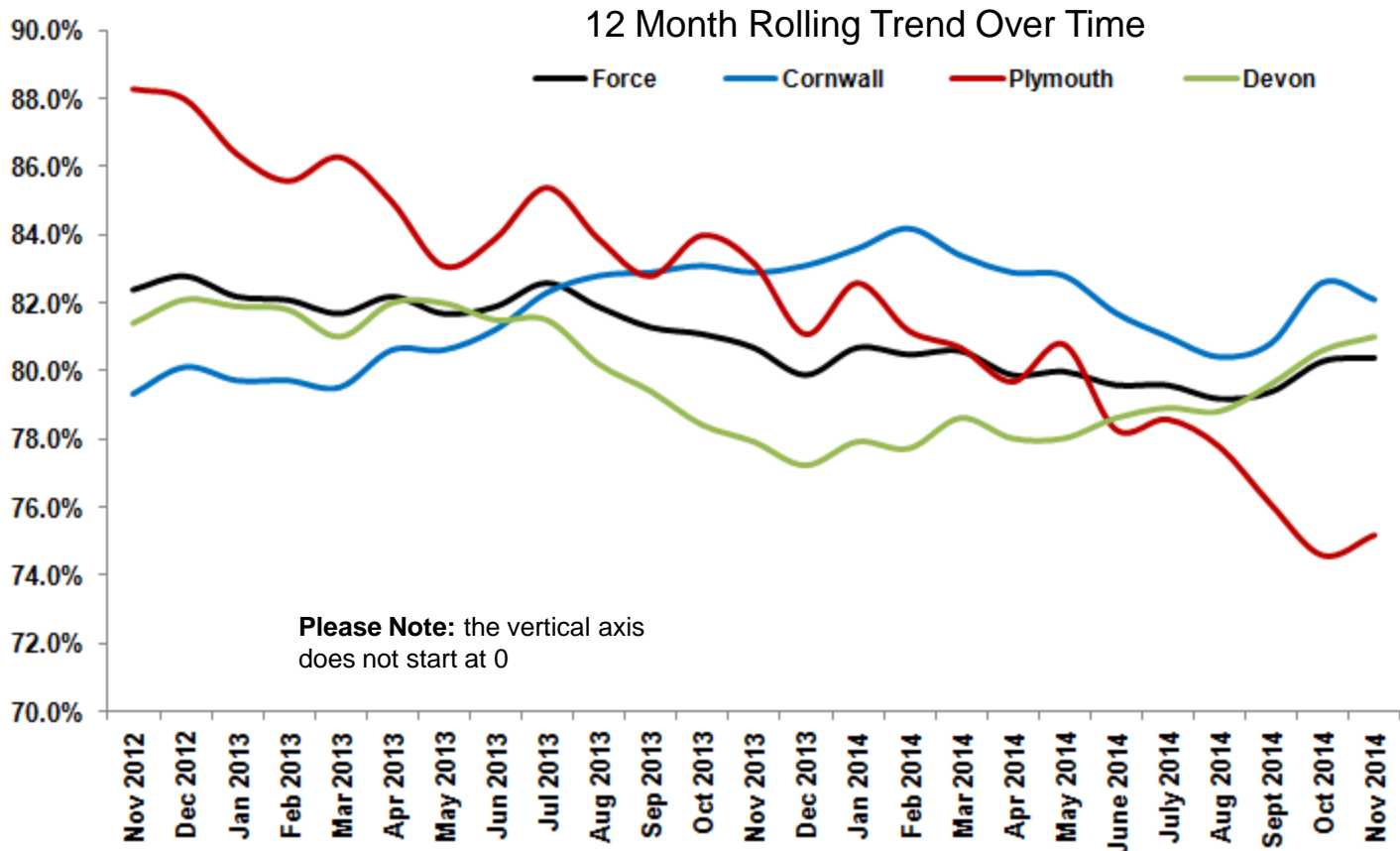
- For the 12 months to November 2014 Survey Results have a confidence interval of +/- 1.6% at Force level
- Please Note: the vertical axes do not start at 0. Projection based on last 6 months performance

Victim Satisfaction – Violent Crime

Secondary Measure

Attainment: Improvement in performance expected

Force - Satisfaction level 12 months to November 2014: 80.4%
Confidence Interval (Force): +/- 2.3%



Please Note: the vertical axis does not start at 0

**To provide a high quality
public service focussed
on reducing harm to the
most vulnerable**

